



Datenblatt - Fiche technique - Data sheet

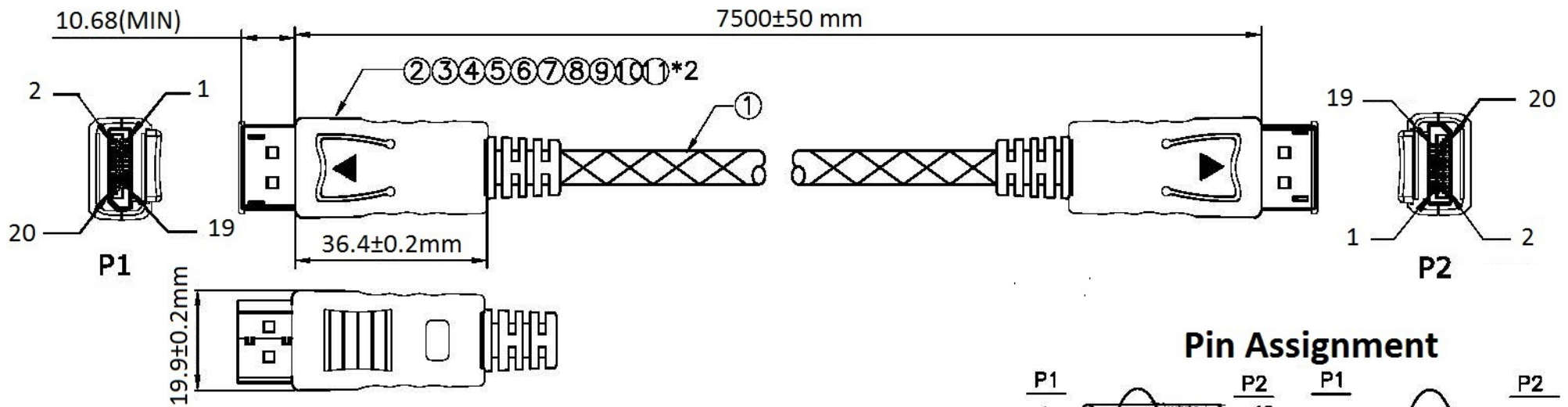
11.04.5648



ROLINE GOLD DisplayPort Kabel, DP ST - ST, 7,5 m

ROLINE GOLD Câble DisplayPort DP M - DP M, 7,5 m

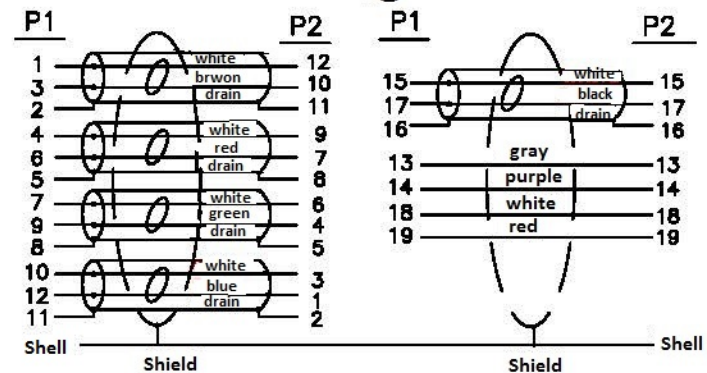
ROLINE GOLD DisplayPort Cable, DP-DP, M/M, 7.5 m



ELECTRICAL TEST:

1. 100% OPEN SHORT, SHORT & MIS WIRE TEST
2. CONTACT RESISTANCE: 2 OHM (MAX)
3. INSULATION RESISTANCE: 10M OHM (MIN)
4. HI-POT TEST: DC 300V/10ms

Pin Assignment



11	w=18mm Double conductive copper foil	0.18	M
10	Nickel plating line buckle OD:7.3	2	pcs
9	Transparent PE RoHS LDPE	4	g
8	45P Black PVC RoHS	10	g
7	black heat shrinkable casing : ϕ 1.5*17mm*2 pcs	0.034	m
6	DisplayPort Port M 28 AWG wire automatic welding machine with double rows black line	2	pcs
5	Displayport M Transparent dust cover	2	pcs
4	DisplayPort M ABS plating gold on the outside shell (No DP LOGO)	2	pcs
3	DisplayPort M ABS Gold plating outside the shell No printing	2	pcs
2	DisplayPort Port M black insulation shell plated, gold contact, 3u	2	pcs
1	DP UL20276 (28AWG*1P+EAM)*5C+28AWG*5C+AEB50%AL OD:7.3mm Black Marking DisplayPort Cable E342987	7.52	m
NO	元 AWM STYLE 20276 80C 30V VW-1W/GOLD/BLACK (32/3/0.2MM 3 Shares of gold sinistral without interval)	Q'TY	UNIT

REV.	ECN	DESCRIPTION	DATE	NAME
		TOLERANCE INCHES M/M		
.X	.015	.30	 ROLINE GOLD DisplayPort Cable DP-DP, M/M, 7.5m, black	
.XX	.010	.10		
.XXX	.005	.05		
DRAWN BY	ZHWL	Item No.	11.04.5648	
CHECK BY		SCALE	NONE	DRAWING NO.:
APPD BY		UNIT	mm	
		DATE	2016.11.26	C04089-00314
				REV. A01
				1/2